



BarteltGLASBerlin



Access a New Level of
Digital Architectural Glass



Design Freedom and Functionality Control

The latest innovations in glass printing technology open new opportunities to combine boundless creativity with highly controlled functionality. Full expression of vision and outstanding budget-smart performance delivery are now possible with digital ceramic in-glass printing.

- **Easy implementation**

Of any pattern or design, with unlimited colors, and high resolution for fine details.

- **Durability and accuracy**

Inks are fused into the glass, providing unmatched resistance to scratching, acid, UV light and weather. Precise micro-drop printing allows accurate photorealistic and graphic designs.

- **A new medium for expression**

The ability to combine transparent, translucent and opaque details in any way, full freedom in colors and shades, and the possibility to create double-vision designs for different front and back experiences, are moving glass printing into the realm of tools for design.

Outstanding Functional Performance

Dip-Tech's solution for digital ceramic in-glass printing meets complex functional performance requirements. It enables control of all special elements of architectural and designed glass:

- **Translucency/opacity**
- **Light diffusion and transmission**
- **Energy efficiency**
- **Privacy levels**
- **Slip resistance**
- **Anti-bird collision**

A New Era In Digital Ceramic In-Glass Printing

Sustainable Architecture

Dip-Tech's printed glass meets environmentally responsible architecture goals:

- The glass is recyclable and offers eco-friendly functionality.
 - Using this technology can assist with LEED and other environmental certification.
 - The printed glass contains no toxic heavy metals.
 - It is an excellent building material for preventing bird collision.
 - Printing a new design on glass panels is well-suited to urban renewal projects where redesigning only parts of buildings is preferable to demolition and rebuilding.
 - Over time, if elements need to be replaced or added, individual glass panels can be printed and perfectly matched to the existing panels, eliminating the cost and waste of more extensive refurbishment.
-

Budget-Smart Design

From the initial design stage, through the value engineering process, Dip-Tech assists architects, designers and consultants with calculating the long-term savings enabled by digital ceramic printed glass. If needed, Dip-Tech helps evaluate alternative ways of using digital in-glass printing, so that printed glass elements can be kept in a project, even as budgets change over time.





GUSTO GELATO

Architect

Iredale Pederson Hook

Location

Perth, WA, Australia

Printed By

Cooling Brothers

Photographer

Cooling Brothers Glass Company
and Robert Frith

SPECIFICATIONS

Printed Area

185 sqm / 1991 sqf

Number of Panels

130

Colors

Grey scale raster imagery
White ink for vector graphic

Glass Type

13.52 Clear Low E with vanceva
interlayers and ceramic frit







MORaine VALLEY COMMUNITY COLLEGE

Architect

Demonica Kemper

Location

Palos Hills, IL, USA

Printed By

Goldray

SPECIFICATIONS

Number of Panels

55

Glass Type

6mm clear







KUOPIO UNIVERSITY HOSPITAL

Architect

Partanen & Lamusuo

Location

Kuopio, Finland

Printed By

Rakla Tampere Oy

SPECIFICATIONS

Printed Area

1,500 sqm / 16,146 sqf

Number of Panels

476

Colors

Digital mix

Glass Type

6+6 mm clear glass







WINNIPEG WOMEN & NEWBORN HOSPITAL

Architect

Parkin Architects and
Architecture49

Location

Winnipeg, MB, Canada

Printed By

Goldray

SPECIFICATIONS

Number of Panels

Approx. 1100

Glass Type

1/4" clear tempered glass

1/4" Solar Ban 70XL Low-E glass
Dual Vision

IGU's with Solar Ban 70XL Low-E





EDUCATION PARK EZINGE

Architect
Atelier Pro

Location
Meppel, the Netherlands

Printed By
Thiele Glas

Architect: Building
Atelier PRO architecten,
The Hague

Art facade
Driessen, Van Deijne,
Amsterdam

Photographer
Si-X & Bert Kiers,
Jean Paul Mioulet

SPECIFICATIONS

Printed Area
560 sqm / 6027 sqf

Glass Type
TG-PRINTdigital (Pos. 2) on
TG-PROTECT®-TVG /
TG-EMAILLE8mm Toughened
Safety Glass







90 GRAYSTON DRIVE SANDTON

Architect
GLH Architects

Location
Gauteng, South Africa

Printed By
PG Glass Building

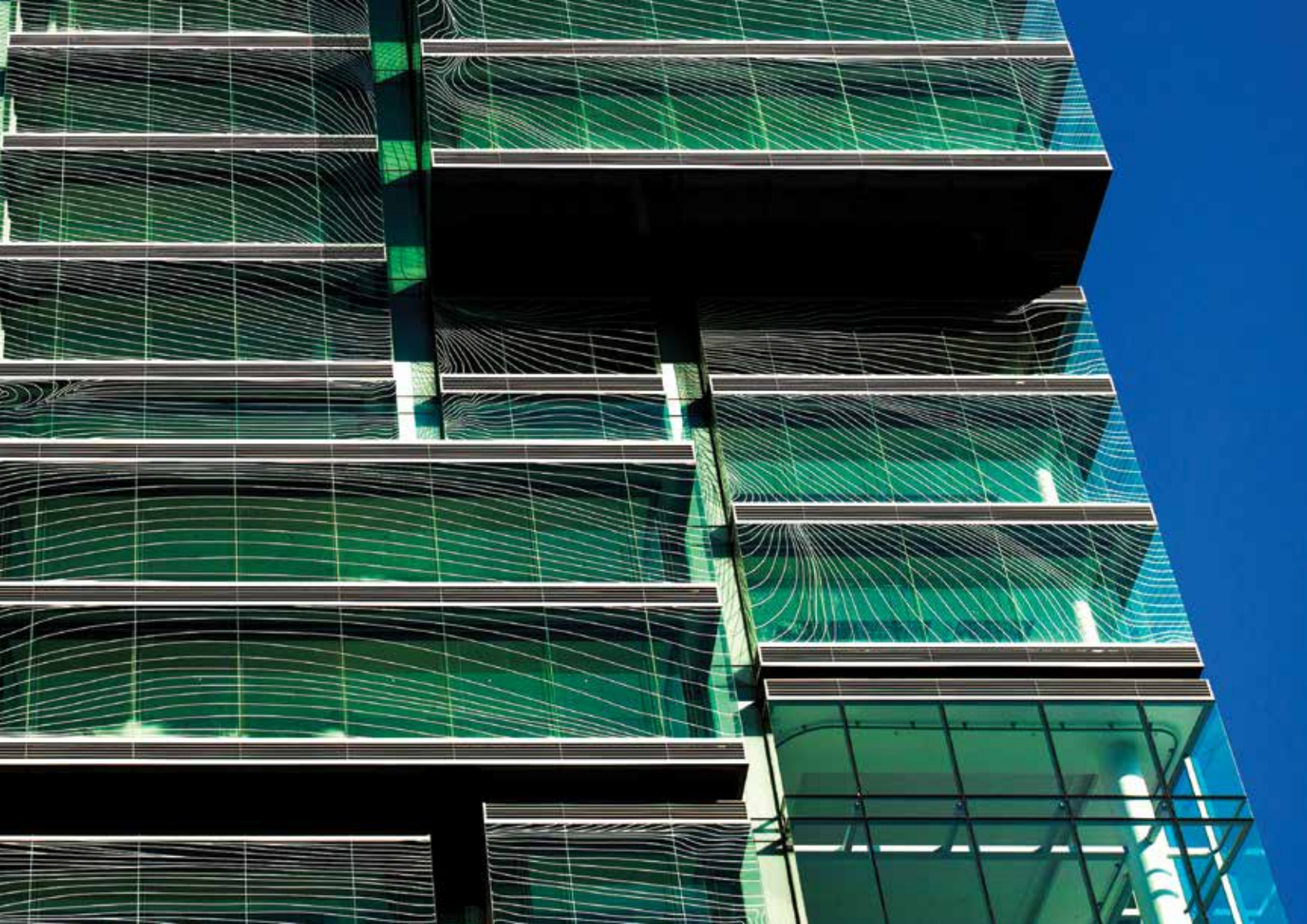
SPECIFICATIONS

Printed Area
20 000 sqm / 215 278 sqf

Colors
Various colors

Glass Type
GraphixArt Pilkington K Low E
8mm Toughened Safety Glass







CARDBOARD CATHEDRAL

Architect

Shigeru Ban Architects

Location

Chwrstchurch, New Zealand

Printed by

Metro Performance Glass

Photographer

Bridgit Anderson



SPECIFICATIONS

Printed Area

126 sqm / 1,356 sqf

Number of Panels

49

Colors

Digital mix

Glass Type

Clear insulated glass





City Centre

POH MING TSE TEMPLE

Architect

Tan Peng Geok,
Park and Associates
Architects

Location

Singapore

Printed by

GSC Glass Ltd

SPECIFICATIONS

Printed Area

144 sqm / 1,550 sqf

Number of Panels

50

Colors

White

Glass Type

Laminated glass







GLASS FARM

Architect

MVRDV

Location

Schijndel, the Netherlands

Printed by

AGC Glass Europe

SPECIFICATIONS

Printed Area

1,800 sqm / 19,375 sqf

Number of Panels

500

Colors

Digital mix

Glass Type

Insulated glass







ORIGAMI BUILDING

Architect
Manuelle Gautrand

Location
Paris, France

Printed by
Interpane
Sicherheitsglas Gmbh

SPECIFICATIONS

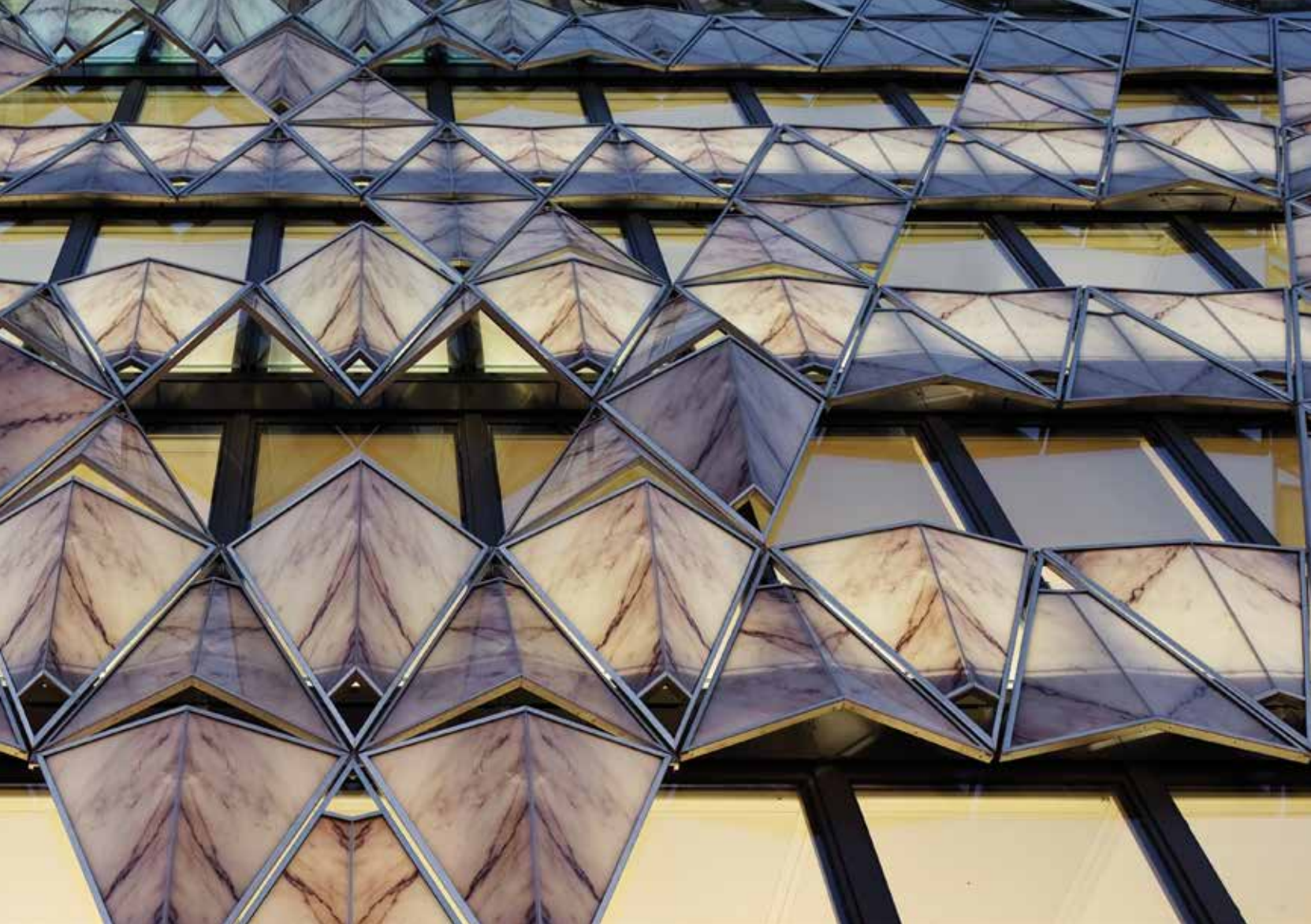
Printed Area
900 sqm / 9,687 sqf

Number of Panels
962

Colors
Digital mix

Glass Type
TVG laminated glass







ROCKHEIM MUSEUM

Architect

Pir II

Location

Trondhjem, Norway

Printed by

Rakla, Finland

SPECIFICATIONS

Printed Area

800 sqm / 8,611 sqf

Number of Panels

420

Colors

White

Glass Type

TVG
laminated glass







SECRETS THE VINE

Architect

Rockwell Group, NY

Location

Cancun, Mexico

Printed by

PVA Vitro

SPECIFICATIONS / EXTERIOR

Printed Area

1,823 sqm / 19,622 sqf

Number of Panels

312

Colors

Grey and white

Glass Type

Clear laminated and tempered glass

SPECIFICATIONS / INTERIOR

Printed Area

10,630 sqm / 114,420 sqf

Number of Panels

3,949

Colors

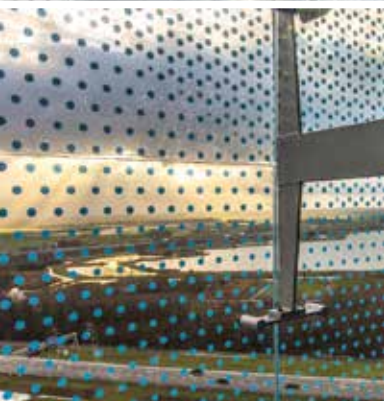
Grey and white

Glass Type

Clear tempered glass







FLETCHER HOTEL

Architect

Bentham Crouwel Architects

Location

Amsterdam, Holland

Printed by

Lisec Shanghai Group
of Companies

SPECIFICATIONS

Printed Area

3,312 sqm / 35,650 sqf

Number of Panels

590

Colors

Three shades of blue

Glass Type

Glass heat-strengthened







O'HARE INTERNATIONAL AIRPORT

Architect
Epstein

Location
Chicago, Illinois, USA

Printed by
Goldray Industries

Designer
Thirst

Photographer
Steve Hall © Hedrich Blessing

SPECIFICATIONS

Printed Area
350 sqm / 3,746 sqf

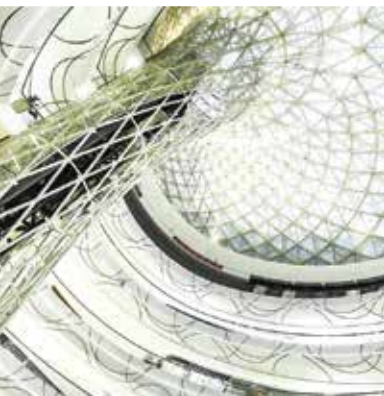
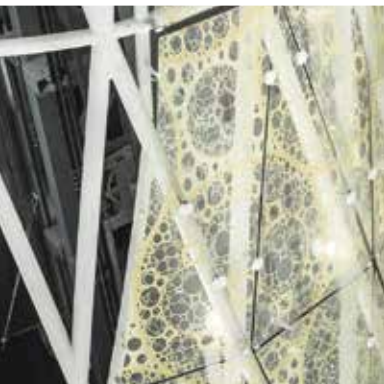
Number of Panels
120

Colors
Digital mix

Glass Type
Laminated glass







HANJIE WANDA PLAZA

Architect
UNStudio

Location
Wuhan, China

Printed by
Glas & Tongue

Photographer
Edmon Leong

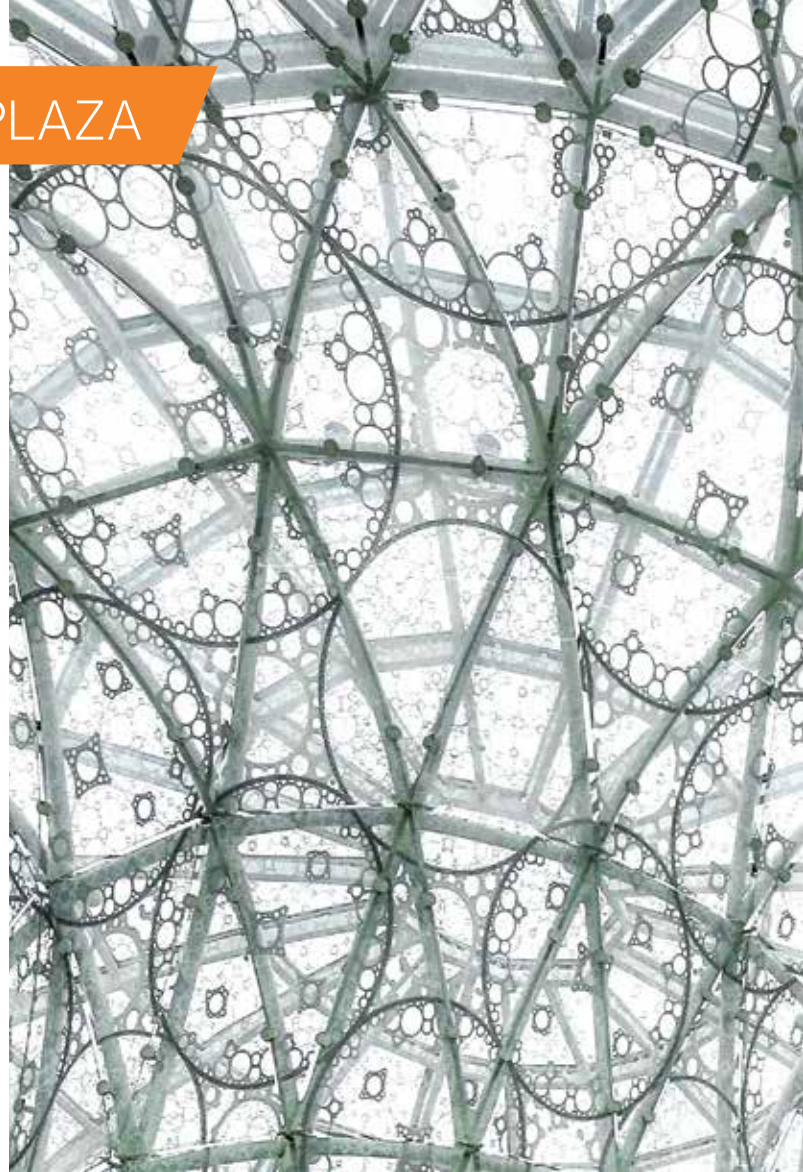
SPECIFICATIONS

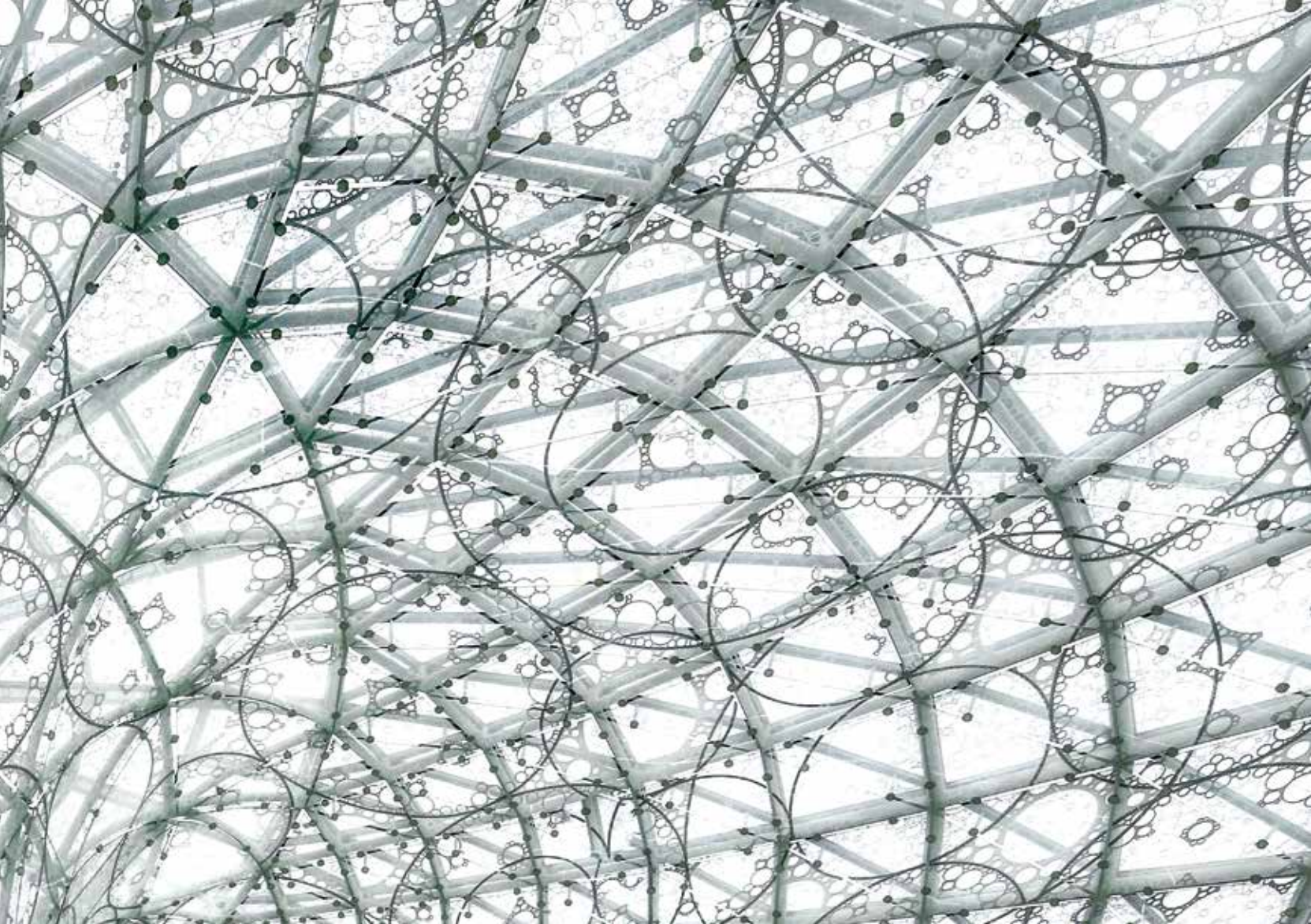
Printed Area
3,500 sqm / 37,673 sqf

Number of Panels
2,346

Colors
Digital mix

Glass Type
6+6 IG white glass, 8+8
IG white bended glass







ART GALLERY

Architect

Turescape Co., Ltd

Location

Guizhou, China

Printed by

South Bright Glass, China

SPECIFICATIONS

Printed Area

4,650 sqm / 50,052 sqf

Number of Panels

1,360

Colors

White

Glass Type

Low-iron glass





ABOUT DIP-TECH

Dip-Tech is the world's leading provider of digital in-glass printing solutions that combine the durability of ceramic inks with the versatility and quality of digital printing. Dip-Tech provides an unmatched and field-proven solution for all exterior and interior glass printing applications. With a single solution, Dip-Tech helps architects express their artistic vision in façades, curtain walls, windows, dividers, and other glass elements and also meet the full range of functional requirements and sustainable architecture goals.

Top architects worldwide already use Dip-Tech printed glass.

www.dip-tech.com/Project_Gallery

Your local partner:

BarteltGLASBerlin GmbH & Co. KG

Sperenberger Str. 7

12277 Berlin (Marienfelde)

Tel. +49 30 72 39 09-0

Fax +49 30 72 39 09-33

info@barteltglas.berlin

www.barteltglas.berlin

